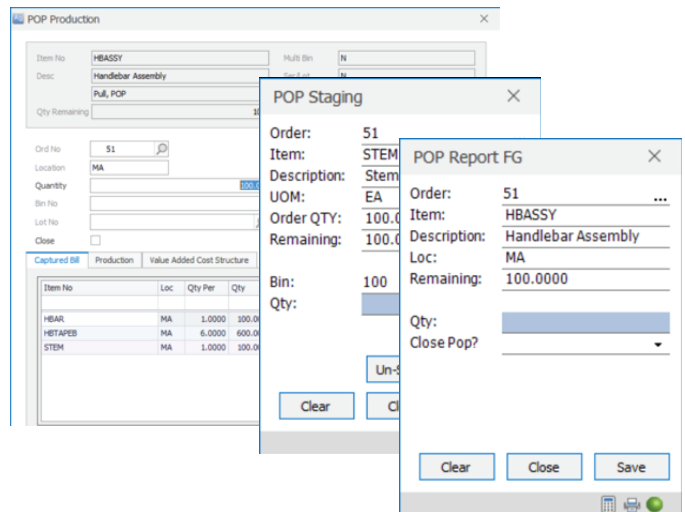


# Macola

# Manufacturing Execution

## Production Order Processing (POP)

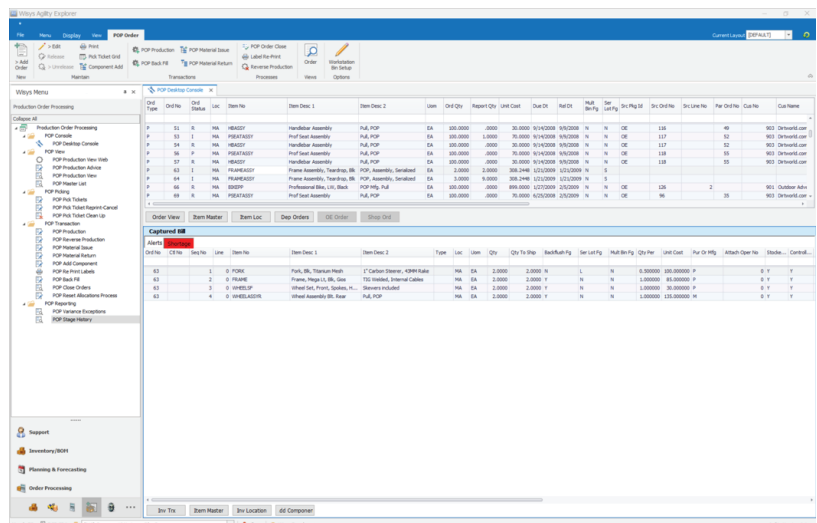
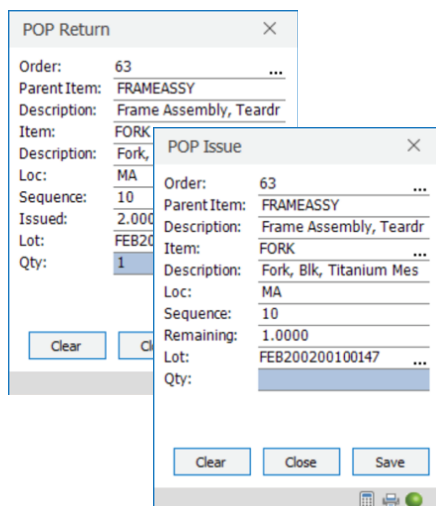
The Production Order Processing (POP) module from Macola provides users with a simple and powerful lean process designed to backflush Bill of Material Components and record finished good inventory. WiSys POP takes these very same Macola POP backflush processes to the production floor and allows the users to transact in real-time. Users transfer inventory to staging bins in the production area and then report production as it occurs either from a handheld device or a desktop. The material in the staging bin is then back flushed just as it is in Macola.



## WiSys POP+

The WiSys POP+ solution extends the capabilities of the Macola POP solution and can be used in conjunction with Macola POP for POP Order Creation and Release. WiSys POP+ uses an extended material model, similar to that of Macola's Shop Floor module. POP+ has added material issue, return and production transactions that are done exclusively in WiSys. This provides customers the flexibility to issue raw materials, including serialized or lot tracked components, in real-time to a production order instead of having to backflush all component items. Inventory components that are issued are consumed as they are used and transferred to a WIP account. Production reporting then considers the exact reporting of the components used with the automatic calculation of variances in both a standard cost and average cost environment.

For more information on WiSys POP+, please read our whitepaper.



# Macola

# Manufacturing Execution

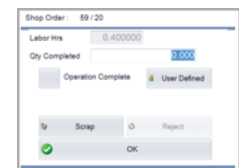
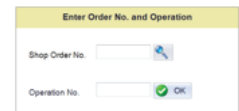
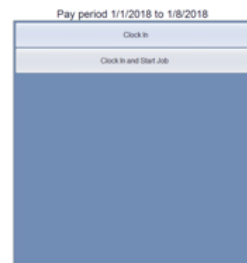
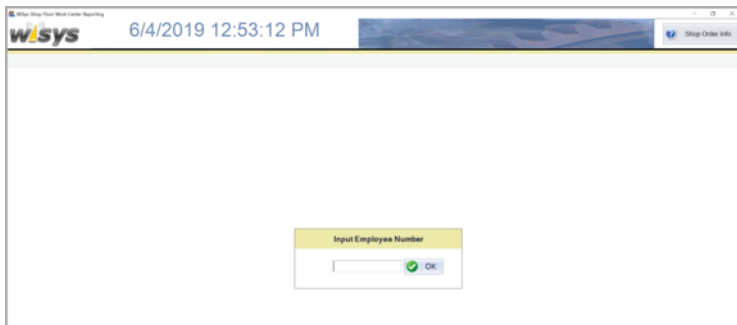
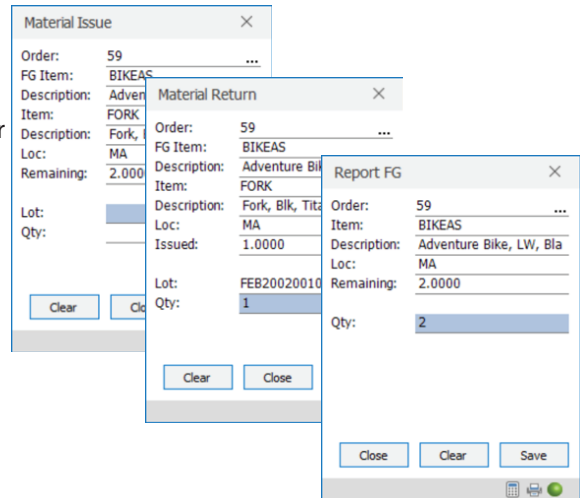
## WiSys Shop Floor

WiSys Shop Floor is a robust, yet simple to use solution that makes Shop Floor data collection on the production floor easy. With WiSys Shop Floor you can issue and return raw materials to an order as well as report production. These transactions can be done using a mobile data collection device or on a workstation.

Our Shop Floor Work Center Reporting (SFWCR) application integrates with Macola's Labor Performance. Employees can clock in and out creating clock card transactions as well as clock in and out of operations to create labor transactions.

WiSys real-time Shop Floor data collection provides:

- Up-to-date inventory quantities, job and labor information
- Reliable job status
- Accurate job costing information for improved standard costs and variances



Common to all WiSys manufacturing execution options is the ability to report production and build pallets of finished goods inventory. A unique pallet id (license plate number) is created and a label produced to identify the pallet. For more information about Agility Pallets, please visit our website.

