



# **SAP Business One Introduction** **Digitalization for Your Business**

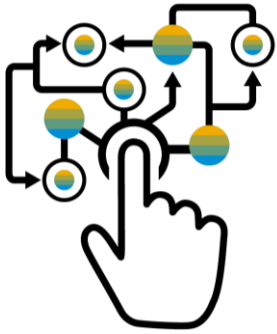
Global Roll-out, SAP  
January, 2021

PUBLIC

# Introduction to **SAP Business One**

# Why explore ERP system?

As your business changes, a solid underlying foundation is critical



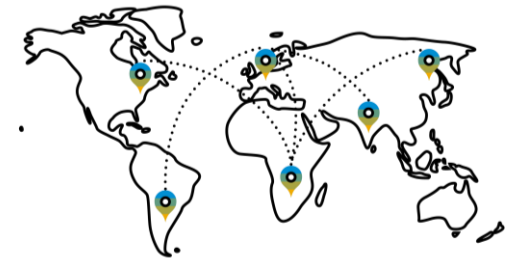
## It's time to go digital

- You want to make the right business decisions at the right time, with real-time access to information
- You need to automate your business processes, to increase productivity



## You are growing

- You are a fast growing company, and your needs are out-pacing your current system capabilities
- As your business grows, you need to put best-practice processes in place



## You are expanding

- If you are expanding into new markets, you need business software that will enable you, not hinder you
- Enable your subsidiary network to harmonize business and intercompany processes

# Run your Business with a Digitized ERP Solution

**Keep your focus on running your business!**

## **Competitive Advantage**

- Become relevant in the global economy by implementing robust business process, allowing you to adapt to market changes, and anticipate business trends

## **Connect Business Functions**

- Your entire business runs more smoothly by touching all business areas which assists by natural cross departmental collaboration within your organization

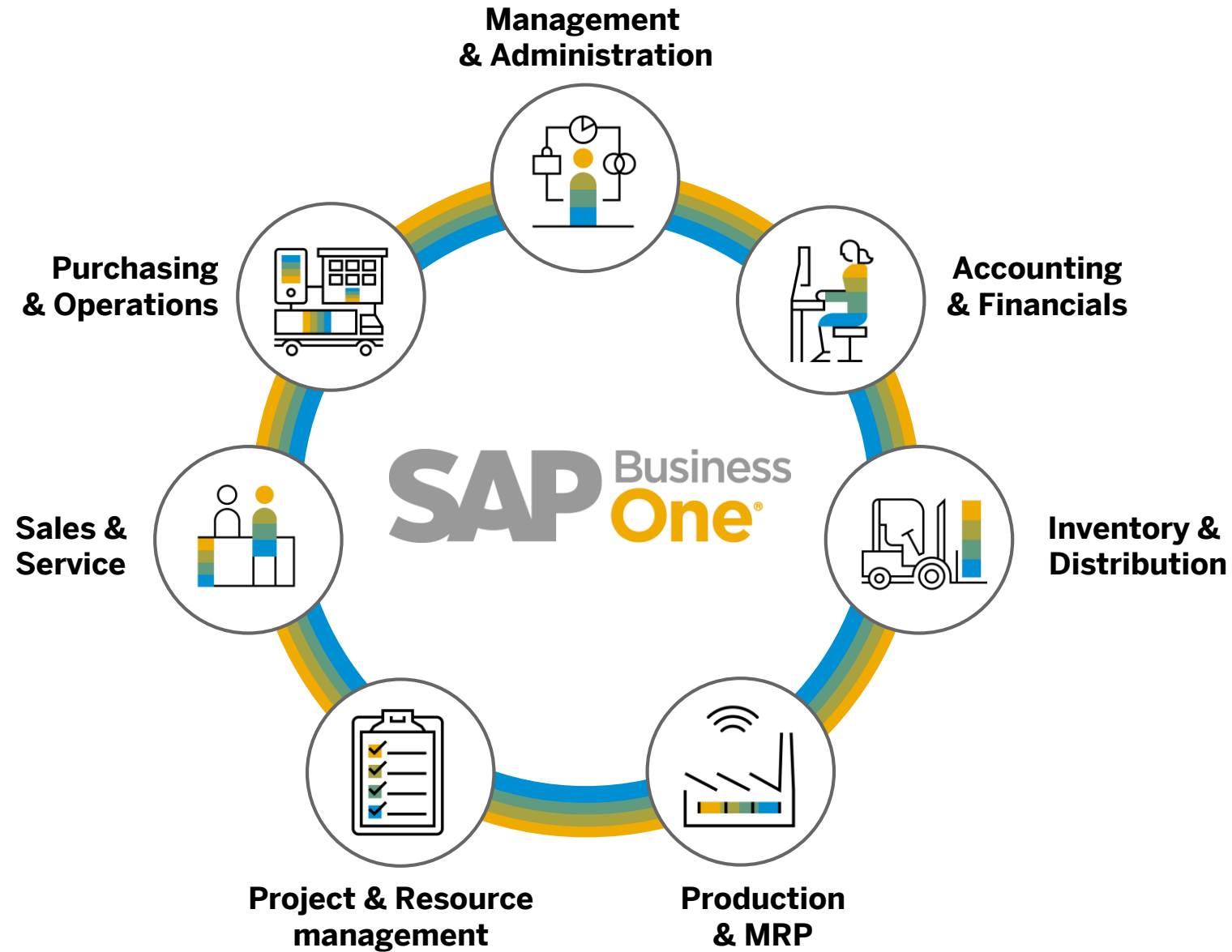
## **Easy Access to Data**

- Analytics and reports helps you to keep informed about your business to make decisions on the back of real-time data insights



# Meet the Digital Core for SMEs

SAP Business One



# Digital Business – Enablers

Digital business is built on **new computing infrastructure** – the enablers are...



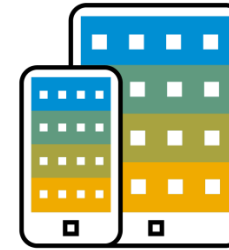
**Analytics**



**Big Data**



**Cloud Technologies**



**Mobile Technologies**

...accelerated by the **Internet of Things (IoT)**, advances in **Machine Learning** and innovations like **Blockchain**.

These technologies give your company the ability to change your business models, and create new products and services in the digital economy.

# The Digital Core For SMEs

## Enhanced by the Digital Enablers



# **Additional Elements for SAP Business One**



# SAP Business One used in more than 170 countries

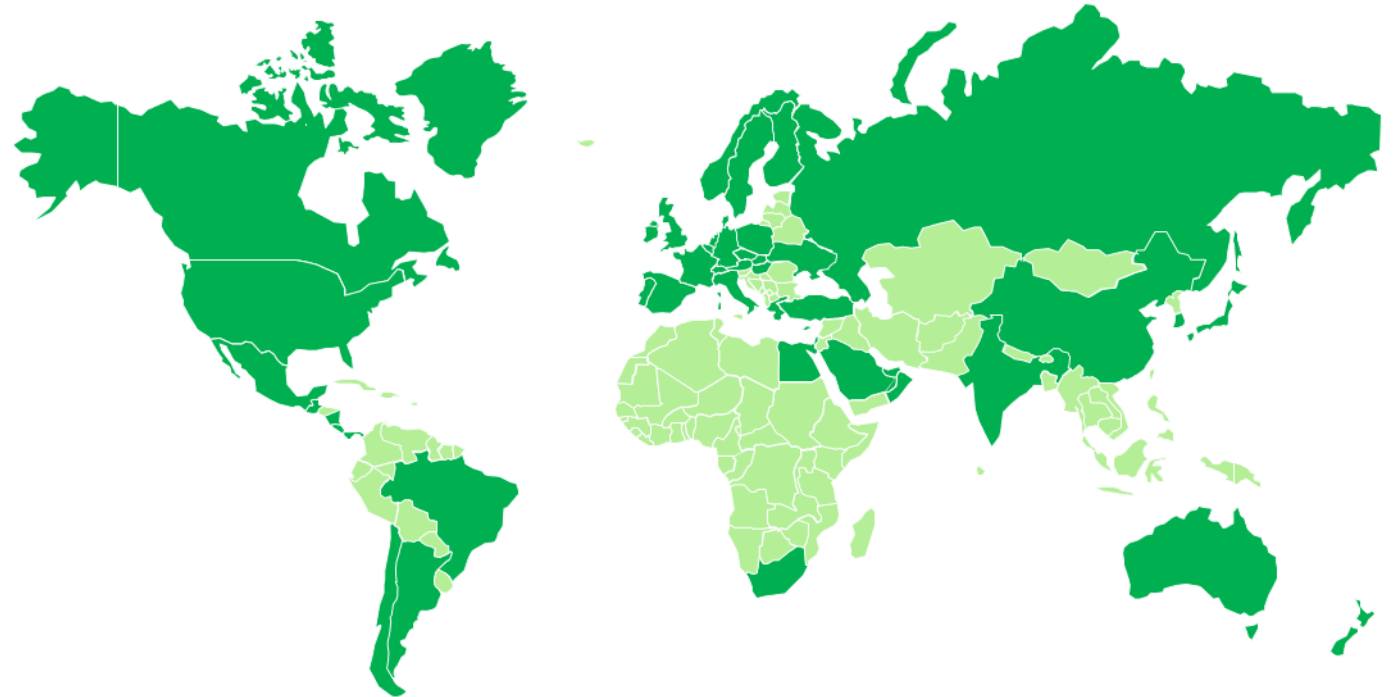
Master the challenge of globalization in your business

## Current localizations (50)

Argentina	Finland	Mexico	Slovakia
Australia	France	Netherlands	South Africa
Austria	Germany	New Zealand	South Korea
Belgium	Greece	Norway	Spain
Brazil	Guatemala	Oman	Sweden
Canada	Hong Kong	Panama	Switzerland
Chile	Hungary	Poland	Turkey
China	India	Portugal	Ukraine
Costa Rica	Ireland	Puerto Rico	United Arab Emirates
Cyprus	Israel	Qatar	
Czech Republic	Italy	Russia	United Kingdom
Denmark	Japan	Saudi Arabia	United States
Egypt	Lebanon	Singapore	

## Countries making use of localizations

Customers in more than 170 countries use localization of other countries, own customization, or partner solution



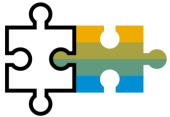
## Current system languages (28)\*:

Arabic, Chinese (simplified/traditional), Czech, Danish, Dutch, English (UK/U.S.), Finnish, French, German, Greek, Hebrew, Hungarian, Italian, Japanese, Korean, Norwegian, Polish, Portuguese (Brazil), Portuguese, Russian, Slovak, Spanish (Latin America), Spanish, Swedish, Turkish, and Ukrainian

\*Convenient option to make additional languages available is using a partner solution (for some countries bundled with functional add-ons) or to define customer specific UI terms using the Custom Language Tool as detailed in SAP Note [1757764](#).

# Integration Options for SAP Business One

Connecting your business networks



## Integration Scenarios

(integral part of the SAP Business One solution)

Integration framework as development environment as well as runtime for predefined integrations, such as

- Dashboards, mobile apps, outsourced payroll, automated request for quotation, SAP Customer Checkout, web services, other SAP and non-SAP applications



## Integration Hub

(ready-made integration scenarios)

Preconfigured templates to integrate cloud-based business applications and services, such as

- Shopify, Magento, Aramex, DHL, FedEx, UPS, Fixer, Mailchimp, SendGrid, Nexmo, Expensify, automated request for quotation



## Subsidiary Integration

(dedicated integration solutions out-of-the-box)

Integrates SAP Business One running in subsidiaries\* with SAP Business Suite software in headquarters' location

- Data harmonization, financial consolidation, business process standardization, and supply chain optimization
- Preconfigured scenarios for master data, sales, purchasing, HQ reporting, and finance as well as customer-specific content



## Intercompany Integration Solution

(dedicated application out-of-the-box)

Integrates different SAP Business One databases in a seamless and easy to consume way

- Streamline and automate intercompany transactions and processes, such as master data distribution and financial consolidation

\* Including branches or franchises of large enterprises

# Industry-specific Solutions

Extend to meet your specific business and industry challenges

Software solution partners have the industry expertise and customer focus to offer industry-specific and horizontal solutions



## Industry Solutions

- Automotive
- Consumer Products
- Engineering
- Food & Beverage
- Healthcare
- High-tech
- Industrial Machinery/Components
- Retail
- Wholesale Distribution



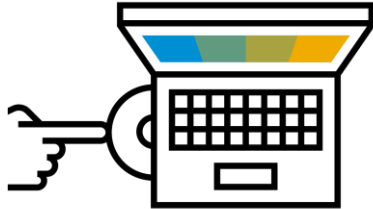
## Horizontal Extensions

Go beyond generic business needs by extending:

- Accounting
- Enhanced CRM
- Payment Processing
- Productivity
- Mobility
- Reporting
- Service

# SAP Business One Deployment Options

On premise and Cloud



On premise

## Key Benefits

- Compliance with internal Data Security Policies
- Direct control and access to your data, allowing flexibility in local reporting accesses
- Better ability to customize and extend your business process
- Leverage internal hardware and existing IT infrastructure and resources
- Perpetual licensing, with higher upfront cost but better long-term TCO
- Less dependence on always-connected internet



Cloud

## Key Benefits

- Easy and affordable deployment
- Secure browser-based access from anywhere, at any time
- Access to the most up-to-date functionality without having to use rely on in-house IT resources to maintain the solution
- Subscription licensing avoiding capital expenditure and allowing for operational expenditure flexibility
- Manage your most critical business functions in your Web browser.

# Make Real-Time Business Decisions with Apps...

Support your business decisions with accurate information



## SAP HANA Apps

- **Enterprise Search**  
Find any information within your organization, just like searching on an internet search engine!
- **Cash Flow Forecast**  
Make informed decisions instantly, ensuring healthy liquidity ratios
- **Available-to-Promise**  
Interact with current and future stock levels to ensure you can satisfy your customer demands
- **Delivery Schedule Management**  
Prioritize customers orders via a drag-and-drop interface, ensuring on-time delivery
- **Intelligent Forecast**  
Implement lean inventory management techniques thus improving efficiency and increase profits
- **Sales Recommendation**  
Suggest other items on-the-fly based on historical buying patterns of the customer and items

# ...and Analytics

Support your business decisions with accurate information



## Analytics and Reporting

- **Interactive Analysis**  
Create flexible ad-hoc analysis within the familiar Microsoft Excel
- **Pervasive Analytics Designer**  
Customize and create new analytics, amplifying the end user experience
- **Dashboards and Advanced Dashboards**  
Embed across all business forms and functions empowering end users with up-to-the-second information
- **Key Performance Indicators (KPIs)**  
Track business-critical measures
- **Cockpit**  
Visualize all analytics in your user specific SAP Business One Desktop
- **Excel Report Designer**  
Create predefined Microsoft Excel reports with a real-time connection to your business data
- **Analytical Portal**  
Run and schedule Crystal Reports and Excel Reports in real time through a web browser
- **Semantic Layer**  
Aiding end users to access information freely using common business terms
- **SAP Crystal Reports**  
Generate and create feature rich and interactive reports with the embedded

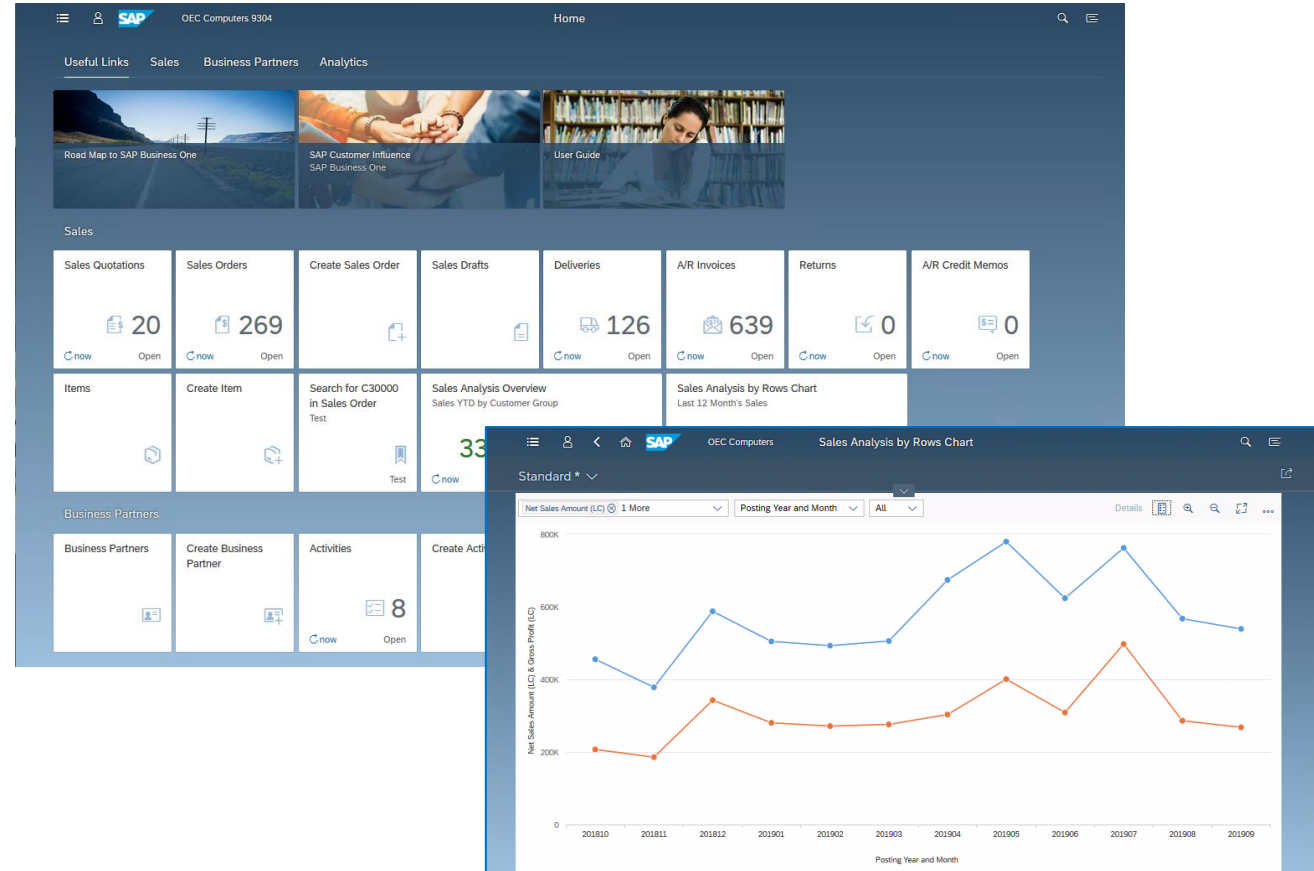
# Launch the Web Client

## ... and optimize user experience



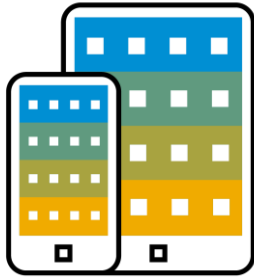
## The Web Client

- Is based on SAP Fiori design principles encapsulating SAP Business One core processes and business logic
- Focuses on creation, processing, and updating of Sales Quotations, Sales Orders, A/R Deliveries, and A/R Invoices
- Supports creation and update of items, business partners, and activities
- Provides sophisticated analytic charting capabilities
- Can be launched in either a desktop computer or tablet; or directly from the SAP Business One desktop application



# Run your Business with native Apps

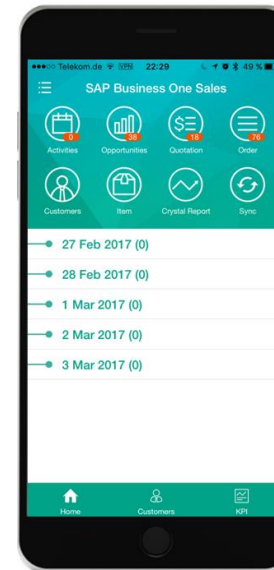
Access important business data from any location at any time



## Mobile Apps

### Key Benefits

- Instant access for employees who need to view and update data from anywhere
- Integrated analytics enable decisions to be made in real time
- Comprehensive sales and service functions
- Increase productivity of employees on the road





# Simplified and Automated Lifecycle Management

## With Remote Support Platform 3.2 for SAP Business One



### Key Benefits

- Reduce your TCO due to increased operational effectiveness and decreased time for support
- Reduce time for system maintenance, i.e. simplified upgrades, automated back-ups, and repairs
- Get accelerated and predictable problem resolution
- Achieve peak system performance, stability and improved data consistency
- Minimize unplanned downtime and business disruption

The screenshot displays the 'Remote Support Platform for SAP Business One' interface. It features a navigation bar with 'Overview', 'Tasks', 'Task Results', and 'Download & Upload'. Below this, there's a status filter showing 'All (52)' tasks, with sub-counts for 'Incoming Tasks (42)', 'Active Tasks (8)', 'Inactive Tasks (0)', and 'Rejected Tasks (1)'. A table lists various tasks with columns for GUID, Name, Description, Version, Priority, Category, Last Execution, and Source. The tasks include 'Missing stored procedure', 'System Maintenance', 'System Status Report', 'Tasks Retrieval', 'Task Results Upload', 'Error This entry already exists...', 'Service type AR Credit Memo...', and 'check warehouses'. Below the table, there's a 'Task Configuration' section with tabs for 'Document', 'General', and 'Communication'. The 'Document' tab is active, showing a document ID and a description of a health check task. The footer indicates the agent service is running on localhost:48800, version 320000, on a database server.

GUID	Name	Description	Version	Priority	Category	Last Execution	Source
0001857931	Missing stored procedure	Could not find stored procedure(s)	4	Medium	Health Check	* N/A	SAP
0001290011	System Maintenance	System task to limit the total file size o...	2	High	System	2016-10-14 12:00 AM	SAP
0001290086	System Status Report	Analyze the status of SAP Business On...	32	High	Health Check	2016-10-17 1:30 AM	SAP
0001290087	Tasks Retrieval	System task to retrieve tasks	3	High	System	2016-10-14 4:39 PM	SAP
0001290093	Task Results Upload	Upload Task Results	2	High	System	2016-10-17 12:29 PM	SAP
0002221881	Error This entry already exists...	When trying to update batch master d...	2	Medium	Corrective	* N/A	SAP
0001580715	Service type AR Credit Mem...	AR Credit Memo of service type appo...	2	Medium	Corrective	2016-10-15 11:58 PM	SAP
9057781354	check warehouses		1	Medium	Simple SQL	2016-09-05 1:05 PM	Partner

**Start Changing Your Business – Now**

# Why Become a Digital Business?

As your business changes, a solid underlying foundation is critical.



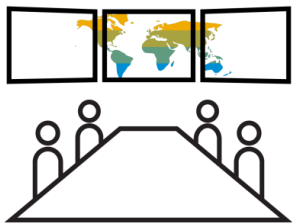
## Digital Economy

- You want to make the right business decisions at the right time, with real-time access to information



## You are Growing

- You are a fast growing company, and your needs are out-pacing your current system capabilities
- As you business grows, you need to put best-practice processes in place
- You need to automate your business processes, to increase productivity



## Expansion

- If you are expanding into new markets, you need business software that will enable you

# A good ERP Solution...

allows you to focus on running your business

## Competitive Advantage



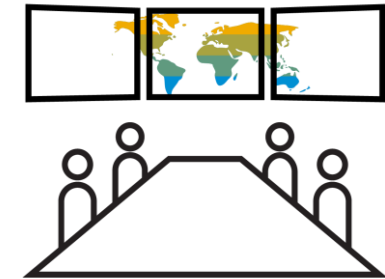
## Connected Business Functions



- Become relevant in the global economy by implementing robust business processes
- Allow your business to adapt to market changes, and anticipate business trends

- Procurement and production systems are connected to finance. Business data is connected to sales and service
- Your entire business runs more smoothly by touching all areas of collaboration within your organization

## Easy Access to Data



- Integrated analytics and reports should always keep informed on the health of your business
- Better decisions can be made on the back of real-time data insight

# Easy to Set Up, Use and Optimize

## Get started quickly and see results



### Complete and Integrated

- All essential business functions – from accounting and sales to purchasing and inventory
- Available “out of the box”
- Gain complete visibility and control



### Fast Time to Value

- Intuitive and easy for your employees to adopt and use
- Implement in a short time period
- Embedded implementation tools based on the proven Accelerated Implementation Program



### Simple and Affordable

- Quick to set up and optimize
- Easy to use
- Get the latest technology priced for small and growing businesses

# SAP Business One

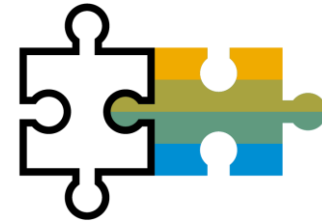
SAP's best selling ERP solution by number of customers



Used by **70,000+** customers



Available as **50** country localizations  
and in **28** languages



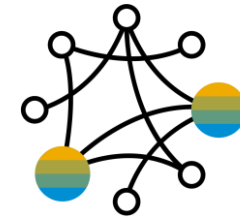
**~300** Software Solution Partners  
with **500+** solutions



Implemented by more than **850** Value  
Added Resellers worldwide



SAP Business One is used in **>170**  
countries

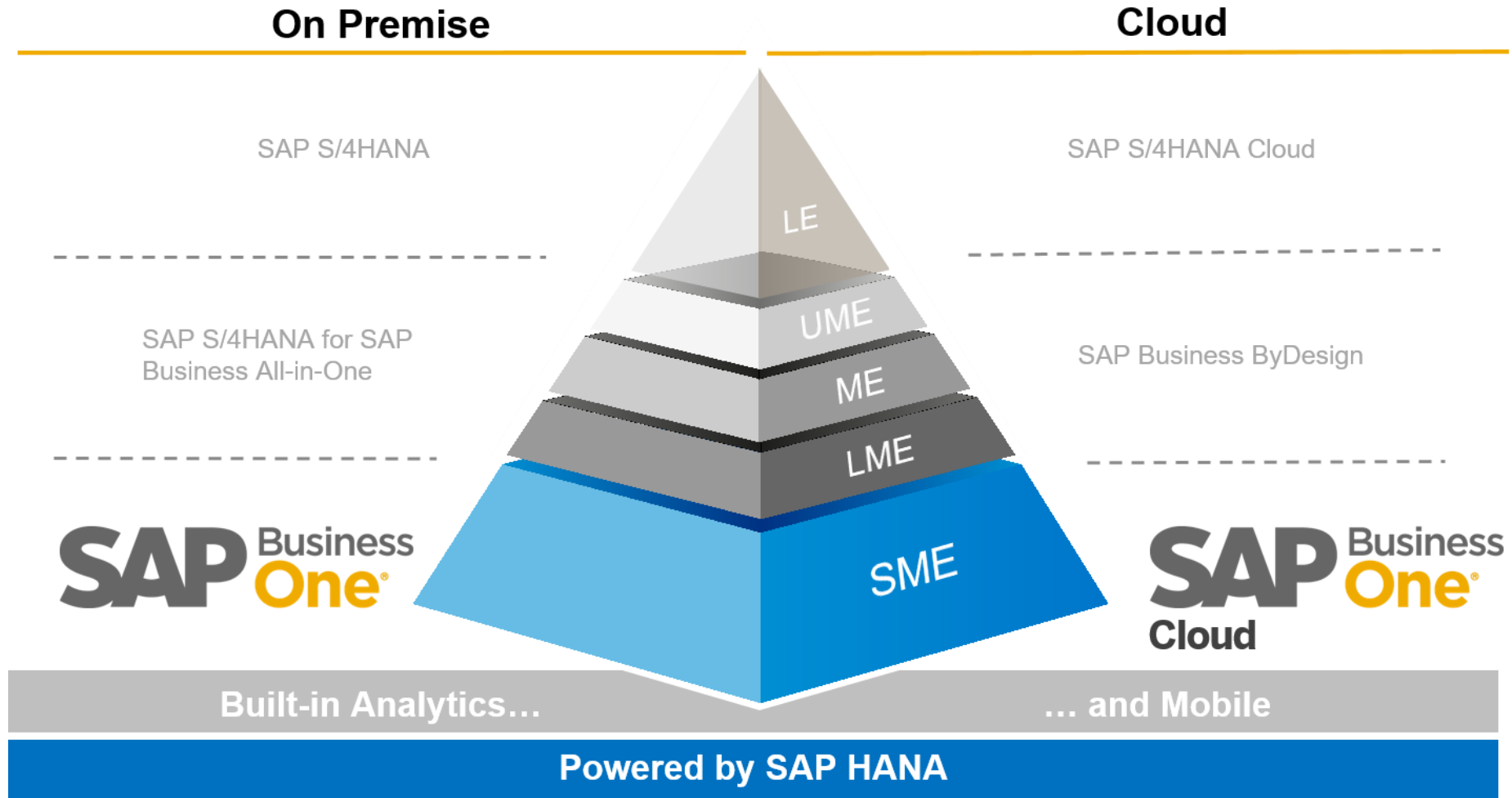


**360+** large enterprises are running SAP  
Business One in **5,600+** subsidiaries

# Appendix

# SAP Business One Positioning for Small and Midsize Enterprises

The SME ERP solution that uses in-memory technology and offers “freedom of choice” deployment





# SAP Business One Key Functionality

SAP Business One Client		Web Client	Mobile	Analytics/Dashboards	Multilingualism/Localizations		
Management & Administration	Accounting & Financials	Purchasing & Operations	Sales & Service	Inventory & Distribution	Production & MRP	Project & Resource Management	Solution Customizing
<ul style="list-style-type: none"> <li>User administration</li> <li>Authorizations</li> <li>Multiple currencies</li> <li>Exchange rates</li> <li>Multiple posting periods</li> <li>Multi-branch</li> <li>Data import</li> <li>Opening balances</li> <li>Approval processes</li> <li>Calendar</li> <li>Microsoft Office integration</li> <li>Mobile Interaction</li> <li>Recurring transactions</li> <li>Drop Ship</li> <li>GDPR</li> </ul>	<ul style="list-style-type: none"> <li>Chart of accounts</li> <li>Journal entries</li> <li>Posting templates</li> <li>Recurring postings</li> <li>Financial reports</li> <li>Budget management</li> <li>Cost accounting</li> <li>Incoming payments</li> <li>Outgoing payments</li> <li>Payment run</li> <li>Bank statement processing</li> <li>Checks &amp; credit cards</li> <li>Deferred payments</li> <li>Account reconciliation</li> <li>DATEV / ELSTER (DE)</li> <li>Fixed Assets</li> <li>SEPA</li> </ul>	<ul style="list-style-type: none"> <li>Purchase request</li> <li>Purchase quotations</li> <li>Web-enabled RFQ</li> <li>Purchase orders</li> <li>Goods receipt POs</li> <li>Goods returns</li> <li>A/P Invoice</li> <li>A/P Reserve Invoice</li> <li>Down-payment Invoice</li> <li>Down-payment request</li> <li>Cancel Marketing Documents</li> <li>A/P credit memos</li> <li>Landed costs</li> <li>Intrastat</li> <li>PEPPOL</li> </ul>	<ul style="list-style-type: none"> <li>Opportunity and pipeline Mgmt.</li> <li>CRM</li> <li>Campaign Mgmt.</li> <li>Blanket agreements</li> <li>Quotations</li> <li>Sales orders</li> <li>Deliveries &amp; Returns</li> <li>Invoices</li> <li>Dunning &amp; Customer Mgmt.</li> <li>Gross profit calculation</li> <li>Service Mgmt.</li> <li>Service planning</li> <li>Customer interactions tracking</li> <li>Equipment card handling</li> <li>Service Dashboards</li> <li>Service contracts</li> <li>Human resource integration</li> <li>Knowledge database</li> <li>Service calendar</li> <li>Service call processing</li> </ul>	<ul style="list-style-type: none"> <li>Item management</li> <li>Item lists</li> <li>Price lists</li> <li>Goods receipts</li> <li>Goods issues</li> <li>Inventory transactions</li> <li>Transfers</li> <li>Serial number mgmt</li> <li>Batch number mgmt.</li> <li>Price lists in multiple currencies</li> <li>Special prices</li> <li>Period and volume discounts</li> <li>Pick and pack</li> <li>Recurring transactions</li> <li>Inventory Tracking</li> <li>Bin Location</li> <li>Multiple Measurements</li> <li>Inventory Counting</li> </ul>	<ul style="list-style-type: none"> <li>Bills of material</li> <li>Item Sets</li> <li>Production orders</li> <li>Goods issues</li> <li>Goods receipts</li> <li>Production Dashboards</li> <li>GL Account Determination</li> <li>Life Cycle Mgmt.</li> <li>Item cost calculation</li> <li>Forecasts</li> <li>MRP</li> <li>Make to order</li> <li>Order recommendations</li> <li>Production Routing</li> </ul>	<ul style="list-style-type: none"> <li>Project management</li> <li>Project stages</li> <li>Stage dependencies</li> <li>Sub-projects handling</li> <li>Project Time Reporting</li> <li>Internal project handling</li> <li>Employee master data</li> <li>Time sheet entries</li> <li>Resource master data</li> <li>Resource capacity planning</li> <li>Gantt chart capacity viewing</li> </ul>	<ul style="list-style-type: none"> <li>User-defined fields creation</li> <li>User-defined tables creation</li> <li>User-define queries creation</li> <li>SQL Query Generator</li> <li>Form UI configurator</li> <li>User-defined alerts</li> <li>Transaction notifications</li> <li>Workflow designer</li> <li>Business process checklist</li> <li>User defined Cockpit</li> <li>User-defined workbench</li> </ul>

# About SAP SE

## Employees and Basic Facts

- Headquarters: Walldorf, Germany
- Founded: April 1, 1972
- Listing: Frankfurt, New York
- 101,450 employees worldwide (09/30/2020)
  - 145 nationalities worldwide

## Customers

- SAP serves >440,000 customers in >180 countries
- Approx. 80% of SAP's customers are SME
- 77% of the world's transaction revenue touches an SAP system

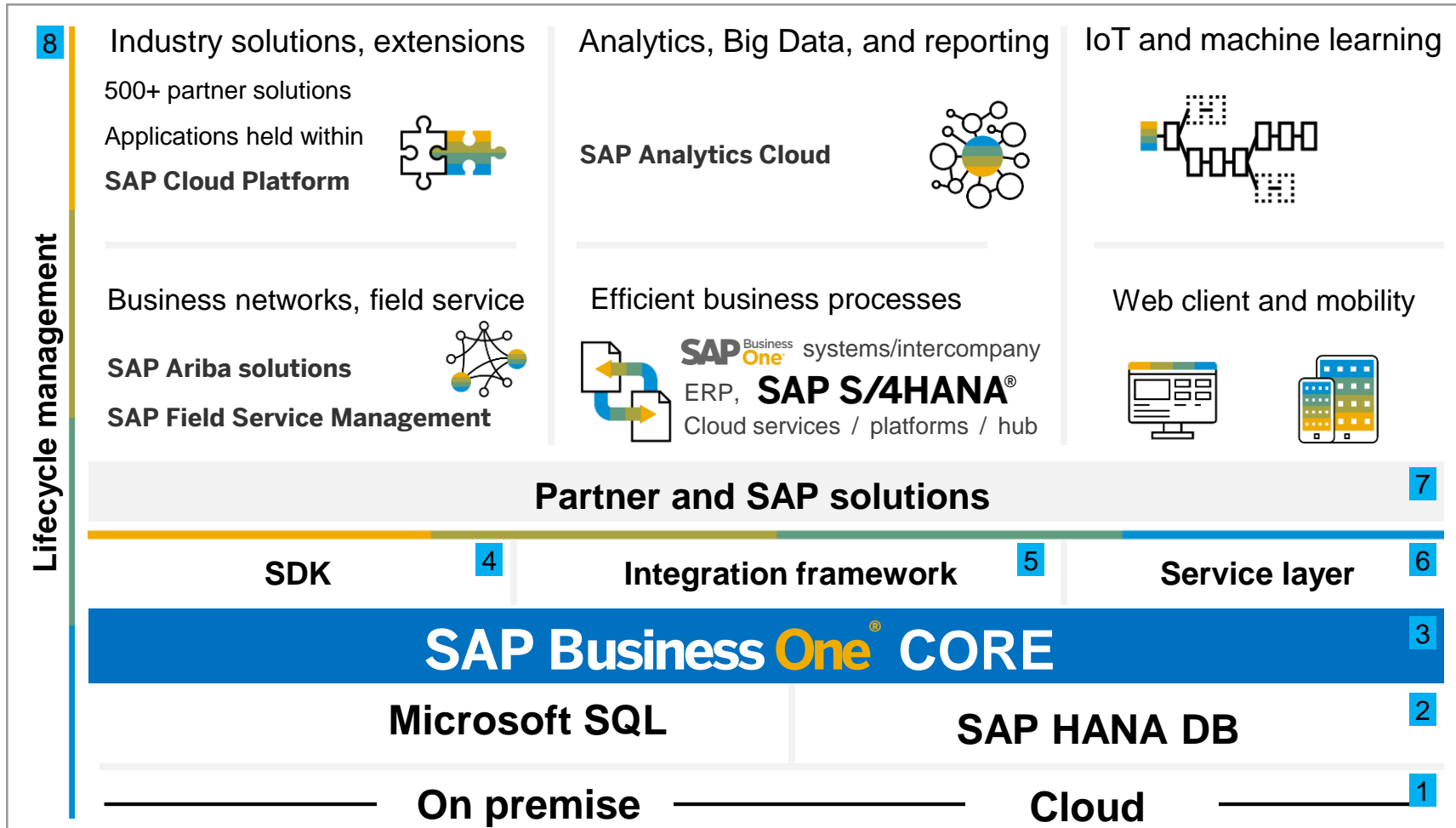
## Market Position

- SAP is market share leader in:
  - Enterprise resource planning (ERP)
  - Analytics
  - Supply chain management
  - Human capital management
  - Experience management software & customer experience
- Top Cloud Vendor
  - Cloud user base: ~230m users
  - 65 datacenters in 35 locations in 16 countries



# SAP Business One solution stack

Customer needs and the value propositions of the product



- 1 Full deployment flexibility
- 2 Runs on in-memory technology
- 3 All standard business processes covered
- 4 Basic application programming interfaces (APIs)
- 5 Robust integration and collaboration
- 6 Interface for SAP HANA and MS SQL applications
- 7 Extends the solution scope based on extensibility layer
- 8 Low cost of ownership and efficient support

# Information for Customers, Prospects, and Partners on SAP Business One



[Public SAP.com Website](#)



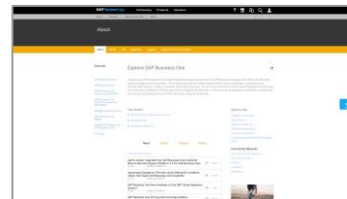
[SAP Help Portal](#)



[Global YouTube Channel](#)



[SAP Business One Learning Hub](#)



[SAP PartnerEdge Portal](#)  
(Partner only)



[Product Road Map](#)  
(Customer and Partner only)

**Thank you.**

Follow us



[www.sap.com/contactsap](https://www.sap.com/contactsap)

© 2021 SAP SE or an SAP affiliate company. All rights reserved.

No part of this publication may be reproduced or transmitted in any form or for any purpose without the express permission of SAP SE or an SAP affiliate company.

The information contained herein may be changed without prior notice. Some software products marketed by SAP SE and its distributors contain proprietary software components of other software vendors. National product specifications may vary.

These materials are provided by SAP SE or an SAP affiliate company for informational purposes only, without representation or warranty of any kind, and SAP or its affiliated companies shall not be liable for errors or omissions with respect to the materials. The only warranties for SAP or SAP affiliate company products and services are those that are set forth in the express warranty statements accompanying such products and services, if any. Nothing herein should be construed as constituting an additional warranty.

In particular, SAP SE or its affiliated companies have no obligation to pursue any course of business outlined in this document or any related presentation, or to develop or release any functionality mentioned therein. This document, or any related presentation, and SAP SE's or its affiliated companies' strategy and possible future developments, products, and/or platforms, directions, and functionality are all subject to change and may be changed by SAP SE or its affiliated companies at any time for any reason without notice. The information in this document is not a commitment, promise, or legal obligation to deliver any material, code, or functionality. All forward-looking statements are subject to various risks and uncertainties that could cause actual results to differ materially from expectations. Readers are cautioned not to place undue reliance on these forward-looking statements, and they should not be relied upon in making purchasing decisions.

SAP and other SAP products and services mentioned herein as well as their respective logos are trademarks or registered trademarks of SAP SE (or an SAP affiliate company) in Germany and other countries. All other product and service names mentioned are the trademarks of their respective companies.

See [www.sap.com/trademark](https://www.sap.com/trademark) for additional trademark information and notices.